



Mixer Grinder Blender Manufacturer and Wholesaler

Automatic Production Line & One-stop Service

Shanghai LINKER Industry Co., Ltd
Tel: +86 66037855
Mobile/What's app: +86 18019763531
Mail: sales@lkmixer.com
Website: www.lkmixer.com

By Catherina
2022.10.8



01

Brief Introduction

Grinder, Blender, Mixer, Crusher, Granulating Manufacturer



www.lkmixer.com

Brief Introduction



LINKER is a leading company engaged in the research and development, production, and sale of pharmaceutical machinery, food machinery, chemical machinery, and daily chemical machinery. Our extensive product range includes crushers, mixers, granulators, dryers, sifters, and more. All our mechanical products are meticulously designed and manufactured in strict adherence to the stringent requirements of "GMP" (Good Manufacturing Practice) standards.

Our company is distinguished by its robust technical capabilities, well-equipped infrastructure, and comprehensive process support. We are adept at providing end-to-end solutions, offering engineering design and equipment manufacturing for complete sets of non-standard products. Over the years, our products have garnered widespread acclaim from a diverse user base, particularly within large pharmaceutical facilities, food production units, chemical plants, and daily chemical manufacturers. We take pride in the trust and praise we have earned from the majority of our users.



"Quality is the cornerstone of our sales policy," and "integrity is the sole path to success" encapsulate the guiding principles of LINKER and its dedicated team. We take immense pride in our commitment to ensuring customer satisfaction. All our products come with a one-year warranty and comprehensive maintenance services. We stand ready to offer valuable technical advice and guidance, along with material support and various other services. Additionally, we maintain a steady supply of equipment spare parts for your convenience.

Our aim is to be a reliable source of support for you and your associates. We extend a warm invitation to both new and long-standing customers to engage with us for negotiations and guidance. Your trust and partnership are of great importance to us, and we look forward to serving your needs and building lasting relationships.



Production Workshop



We uphold rigorous on-site management at our plant, where we diligently enforce the 6S set of regulations. Our commitment to compliance with operating procedures is unwavering, as it underpins our dedication to production safety. Furthermore, we continuously intensify our efforts in core technology research and development, fostering innovation at every turn. Our relentless pursuit of excellence and perfection is the driving force behind our operations.

Our manufacturing facility is equipped with state-of-the-art production machinery, and our quality management practices are characterized by their stringent nature. We meticulously oversee the precision of our production testing processes, leaving no room for error. This unwavering commitment ensures that each product we deliver exhibits exceptional performance and quality.



Production Equipment



We produce high quality products that meet international standards by adopting fine production equipment brand new industrial concepts and powerful technical strength, so as to accelerate the industrialization speed of our enterprise. Production tools are an important sign of productivity level. Sophisticated production facilities represent advanced productivity.



02

Product Introduction

Grinder, Blender, Mixer, Crusher, Granulating Manufacturer



Contents



01 破碎机系列 CRUSHER SERIES

- 10 CSJ 高效粗碎机 High coarse crusher
- 11 CSJ 除尘粗碎机 Dust removal coarse crusher

02 粉碎机系列 PULVERIZER SERIES

- 12 WF 万能粉碎机 Universal crusher
- 13 B 型系列除尘粉碎机组 Dust grinder group
- 14 FL 系列风冷粉碎机 Air Cooled Crusher
- 15 WF 脉冲除尘粉碎机组 Pulse dust grinder group
- 16 WFM 超微粉碎振动磨 Ultrafine grinding vibration mill
- 17 WFJ 涡轮粉碎机 Dyadic type turbine pulveriger
- 18 WFJ 系列超微粉碎机 Super efficient pulveriger
- 19 GFSJ 高效粉碎机 High-efficiency crusher
- 20 WFJ 中草药粉碎机组 Chinese herb crusher set
- 21 GFSJ 脉冲除尘高效粉碎机 High-efficiency crusher
- 22 WF 风选式除尘粉碎机 Winnowing dust grinder
- 23 SG 双棍粉碎机 Double stick crusher

0A 制粒机系列 GRANULATOR SERIES

- 44 GHL 高效湿法混合制粒机 High-efficiency wet type mixing granulator
- 45 XZL 旋转制粒机 Rotary granulators
- 46 GK 系列干式制粒机 Dry granulating machine
- 47 KZL 系列快速整粒机 Quick sorting machine
- 48 FZ 系列粉碎整粒机 Crushes entire granule machine
- 49 YK 摇摆式颗粒机 Swing granule machine
- 50 JZL 系列挤出造粒机 Extrusion pelleting machine

03 混合机系列 MIXER SERIES

- 24 FZH 方锥混合机 Square cone mixer
- 25 W 系列双锥混合机 Double tapered mixer
- 26 YYH 系列一维混合机 Roll motion one-dimensional mixer
- 27 EYH 二维运动混合机 Two-dimensional movement mixer
- 28 SBH 三维运动混合机 Three-dimensional movement mixer
- 29 GHJ-V 形系列混合机 High-efficient mixer
- 30 CH-VI 型强制式拌混合机 Forced stirring mixer type
- 31 DLG 螺旋锥形混合机 Single spiral cone mixer
- 32 SHJ 双螺旋锥形混合机 Double spiral cone mixer
- 33 CH 系列卧式槽形混合机 Thank type mixer
- 34 WCH 系列双桨混合机 Double pulp mixing machine
- 35 ZGH 高速混合机 High speed mixer
- 36 WLDH 卧式螺旋带混合机 Horizontal spiral ribbon mixer
- 38 LDH 卧式犁刀混合机 Horizontal ploughshare mixer
- 40 WLSH 卧式双轴螺旋带混合机 The horizontal double spiral ribbon mixer
- 41 MLX 连续混合机 Continuous mixer
- 42 WZ 无重力双轴桨叶混合机 Weightless biaxial paddle mixer

05 配套设备系列 SUPPORTING EQUIPMENT SERIES

- 51 LXS 系列离心筛 Series rotary screener
- 52 ZS 系列高效筛粉机 Efficient sifting machine
- 53 ZS 振荡筛 Vibrating Screener
- 54 FS 方形振动筛 Square vibration sieve
- 55 LS 系列螺旋输送机 Spiral conveyer
- 56 ZKS 真空加料机 Vacuum feeder
- 57 敞口式包装机 Open type packing machine
- 57 气压式包装机 Pneumatic packing machine
- 58 CT/CT-C 热风循环烘箱 Heat wind cycle baker

CSJ Coarse Crusher



✓ Main Uses

The grinder suitable for pharmaceutical, chemical, metallurgy, food industry, is finely pulverized before machining. Road Process equipment, it is not material viscosity, hardness, softness, and fiber restrictions on any Materials can play a better role in the smash.

✓ Working Principle

The grinding mill is a horizontal structure, material from the crusher hopper into the crushing chamber, a rotating fixed blade knife and cutting and impact be crushed by the rotating centrifugal force, the material automatically flows to Mill exit. The machine according to "GMP" standard design, the grinder all stainless steel materials easy to clean low noise is now in the best crude crushing equipment.

技术参数 Technical parameter

型号 Model	主要外形尺寸 Main dimensions(mm)				生产能力 Production capacity (kg/h)	进料粒度 Feeding granularity (mm)	出料目数 Discharging mesh numbers (mm)	主轴转速 Spindle rotation speed (rpm)	总功率 Total power (kW)	重量 Weight (kg)
	长(L)	宽(W)	高(H)	台面式(H)						
CSJ-200	560	580	1200	900	50-200	≤ 100	0.5-20	650	3	220
CSJ-300	560	680	1250	1000	80-300	≤ 100	0.5-20	650	4	300
CSJ-400	560	780	1300	1100	100-500	≤ 100	0.5-20	650	5.5	420
CSJ-500	560	880	1500	1300	120-700	≤ 100	0.5-20	650	7.5	580
CSJ-600	560	980	1700	1550	150-1000	≤ 100	0.5-20	650	11	750

CSJ Dust Removal Coarse Crusher



✓ Main Uses

The equipment is suitable for coarse crushing and shearing of bales of grass, and can be used for breaking. After crushing, the particle size of the material is uniform, the powder is less, and the single machine yield is high (the single machine yield is three times that of the medicine cutting machine). At the same time, it is suitable for rough crushing and shearing of hard root, sugar, horn and other materials. Strong crushing and shearing performance reduces the co-technology of umbrella, moistening medicine and so on, and effectively protects the medicinal content of Chinese medicinal materials.

✓ Working Principle

This machine is made of high strength stainless steel design, strong impact resistance, special imported cutting tools, strength is three times higher than similar products, easy to clean, not by the material viscosity, hardness, softness and other restrictions, any material can play a better crushing effect, convenient replacement screen, feed port increase protective device, high safety, no wearing parts.

技术参数 Technical parameter

型号 Model	120	200
生产能力 Production capacity (kg/h)	50-300	150-800
进料粒度 Feed size (mm)	≤ 100	≤ 100
粉碎粒度 Grinding size (mm)	2-20	2-20
主轴转速 Spindle speed (rpm)	500	500
电机功率 Motor power (kW)	4	5.5
重量 Weight (kg)	220	280
外形尺寸 Dimension (mm)	700 × 800 × 1250	800 × 650 × 1350



WF Universal Crusher



✓ Main uses

This machine is mainly used in chemical, pharmaceutical (Chinese medicine), food, spices, resin powder, powder coating and other weak electrical substances and high temperature resistant materials.

✓ Working Principle

The unit utilizes the relative movement between the movable to the discs to cause the material to be crushed by the impact of the toothed disc, the friction and the impact of the materials. The pulverized material automatically enters the collecting bag by the action of the rotating centrifugal force, and the dust is filtered and recovered by the dust box through the cloth bag. The machine is designed according to the "GMP standard, all made of stainless steel, and there is no dust flying during the production process. Moreover, it can improve the utilization rate of materials and reduce the cost of enterprises, and has reached the international advanced level.

技术参数 Technical parameter

型号 Model		20B	30B	40B	50B	60B	80B
生产能力 Production capacity(kg/h)		60-150	100-300	160-800	200-1000	300-1500	500-2000
主轴转速 Spindle rotation speed(r/min)		5300	4200	3800	3200	3800	2200
进料粒度 Feeding granularity(mm)		10	10	10	15	15	15
粉碎粒度 Crushing granularity(目)		20-150	20-120	20-120	20-120	20-120	20-120
粉碎电机 Crushing motor(kW)		4	5.5	7.5	18.5	22	30
吸尘电机 Dust removal motor(kW)		0.55	0.55	1.1	1.5	2.2	3
外形尺寸 Dimensions (L × W × H)	带吸尘 With dust removal	1100 × 600 × 1650	1300 × 700 × 1850	1350 × 700 × 1920	1400 × 800 × 2700	1600 × 900 × 2300	1800 × 1200 × 2500
	单机 Single machine	550 × 500 × 1200	600 × 550 × 1320	650 × 600 × 1550	700 × 650 × 1680	850 × 800 × 1820	950 × 900 × 1960

B Type Dust Grinder Group



✓ Main purpose

This machine is mainly used in chemical, pharmaceutical (Chinese medicine), food,spices, resin powder, powder coating and other weak electrical substances and high temperature resistant materials.

✓ Main feature

This machine adopts a wind wheel type high-speed rotary knife. The fixed knife is used for impact, shearing and grinding. It not only has a good pulverizing effect, but also generates a strong air flow in the machine cavity when pulverizing, and the heat of the crushing chamber and the finished product flow out from the screen together. The crushing fineness can be determined by changing the screen.

技术参数 Technical parameter

型号 Model		20B	30B	40B	50B	60B	80B
生产能力 Production capacity(kg/h)		60-150	100-300	160-800	200-1000	300-1500	500-2000
主轴转速 Spindle rotation speed(r/min)		5300	4200	3800	3200	3800	2200
进料粒度 Feeding granularity(mm)		10	10	10	15	15	15
粉碎粒度 Crushing granularity(目)		20-150	20-120	20-120	20-120	20-120	20-120
粉碎电机 Crushing motor(kW)		4	5.5	7.5	18.5	22	30
吸尘电机 Dust removal motor(kW)		0.55	0.55	1.1	1.5	2.2	3
外形尺寸 Dimensions (L x W x H)	带吸尘 With dust removal	1100 x 600 x 1650	1300 x 700 x 1850	1350 x 700 x 1920	1400 x 800 x 2700	1600 x 900 x 2300	1800 x 1200 x 2500
	单机 Single machine	550 x 500 x 1200	600 x 550 x 1320	650 x 600 x 1550	700 x 650 x 1680	850 x 800 x 1820	950 x 900 x 1960



FL Air Cooled Crusher



✓ Maim uses

Prinarily for the pharmaceutical, chemical, food(example:ginger, chili, pepper, oil and wheat, soybean, sugar, star anisecinnamon),and othermaterials in the crushing process lowhardness, fineness adjusted between 10-120mesh, high yieldfine grain size, low noise, low energy consumption, simplemaintenance,and easy to install,especially for oily, viscous.heat-sensitive,fibrous materials such as low bardnesscrushing process.

✓ Working Principle

Shift mill, the motor driven high-speed rotating spindle andcutter, Circle cutter and the screen broken grinding blocks. grinding vice,when the material from the hopper into the machine in the cavity, the material in the air in the rotating cutter closely to friction and a strong shock to the inside of the leaf cutter and leaves the gap between the block and mill grinding again.In the crushed material the knife a lot of airinhaled, which played a cooling air machine, grinding material sand the role of transmission fines. Materials depends on thefineness of grinding nature of the materials and screen size, and the materials and air throughput. Grinder equipped with aspecial bearing labyrinth seal components can effectively prevent dust entering the bearing cavity, thus extending bearing life. Equipped with a silicon rubber gasket inside thedoor, no dust leakage and pollution of the operating environment.

技术参数 Technical parameter

型号 Model	FL-250	FL-350	FL-600	FL-800
生产能力 Production capacity(kg/h)	30-300	40-800	100-1600	200-2200
进料粒度 Feeding size(mm)	≤5	≤5	≤5	≤10
粉碎细度 Crushing fineness(mm)	30-120	30-120	30-120	30-120
主轴转速 Spindle speed(r/min)	4200	3800	2900	2200
总功率 Motor power(kW)	4/5.5	7.5/11	18.5/22	18.5/22
重量 Weight(kg)	285	350	650	1350
外形尺寸 Dimensions(mm)(L x W x H)	550 x 420 x 1400	770 x 750 x 1500	1200 x 1000 x 2250	1250 x 1100 x 2500

WF Pulse Dust grinder



✓ Main feature

The machine consists of a crushing machine, a cyclone separator, a pulse dust box and an induced draft fan. The material enters the crushing chamber through the feeding hopper, and is crushed by the high-speed rotating blade to obtain the crushing. The crushed material enters the cyclone separation chamber by the centrifugal force of the rotating centrifugal force and the induced draft fan, and is discharged after the fan is turned off, and the impulse dust removing box. It is filtered through a filter cartridge and recovered, and the fineness of the pulverization is adjusted by a sieve. The machine is designed according to GMP standards, all made of stainless steel, and the production process is dust-free.



✓ Main purpose

This machine is suitable for the pharmaceutical, chemical, food magnetic materials, powder and other industries. It is a new generation of crushing equipment that combines crushing, vacuuming and continuous discharging.

技术参数 Technical parameter

型号 Model	生产能力(kg/h) Production capacity	进料粒度(mm) Feeding granularity	出料目数(目) Discharging mesh numbers	主轴转速(rpm) Spindle rotation speed	总功率(kW) Total power	重量(kg) Weight
WF-30	100-300	< 10	12-120	3800	11.25	700
WF-40	200-800	< 12	12-120	3400	15.75	950
WF-50	280-1000	< 15	12-120	2900	26.75	1200
WF-60	300-1200	< 15	12-120	2300	30.25	1400
WF-80	400-1800	< 20	12-120	1800	48.75	1700
WF-100	500-2000	< 20	12-120	1400	64.25	2100



WFM Ultrafine Grinding Vibrating Mill



✓ Main uses

This machine is suitable for ultrafine pulverization of fibrous materials in various industries such as pharmaceutical, chemical, food, etc., such as asganoderma lucidum, licorice, shrimp shells and various bones and plant fibers. The pulverization fineness can reach micron level. At present, the aircraft has reached the international advanced level.

✓ Working Principle

The machine is a horizontal vibrating mill. The material enters the crushing chamber from the feeding hopper. After the vibration, the grinding rod in the crushing chamber collides with the material and grinds to obtain the crushing. The machine is equipped with a watercooling device, which can control the temperature in the crushing chamber. The "GMP standard design is made of stainless steel and the equipment is operated in a sealed state. No dust and no pollution.

技术参数 Technical parameter

型号 Model	WFM-10	WFM-50	WFM-100
工作容积 Working volume(L)	10	50	100
处理量 Handling capacity(kg/h)	2-2.5	10-30	20-60
粉碎细度 Crushing fineness(Mesh)	200-1800	200-1800	200-1800
冷却形式 Cooling form	液冷(冷水机) Liquid cooling (chiller)		
功率 Power(kW)	1.5	7.5	11
重量 Weight(kg)	580	1500	2800
外形尺寸 Dimensions(L x W x H)	1200 x 800 x 1400	1700 x 900 x 1700	2850 x 1200 x 1830

WFJ Tyadic Type Turbine Pulverizer



✓ **Main purpose:**

Mainly used in pharmaceutical, chemical, food (example: ginger, chili, pepper, oil and wheat, soybean, star anise, cinnamon, dried vegetables) and other materials in the crushing process. Low hardness, fineness of 30-150 mesh adjusted between high yield, fine grain size, low noise, low energy consumption, simple maintenance, and easy to install, especially for oily, viscous, heat-sensitive, fibrous materials such as low hardness crushing process.

✓ **Main feature:**

Shift turbo mill, the motor drive shaft and the turbine high-speed rotation. Ring on the turbine and the screen broken grinding blocks grinding vice, when the material from the hopper into the machine in the cavity, the material flow in the turbine rotating in the closely to friction and impact strongly on the inside of the turbine blades, and leaves the gap between the block and mill grinding again. In the crushed material while absorbing large quantities of air turbine, which played a cooling air machine, grinding materials and the role of transmission fines. Materials depends on the fineness of grinding nature of the materials and screen size and the materials and air throughput. WFI turbine mill bearing components with a special seal, can effectively prevent dust entering the bearing cavity, thus extending bearing life. Equipped with a silicon rubber gasket inside the door, no dust leakage and pollution of the operating environment.

技术参数 Technical parameter

型号 Model	20型	30型	40型	60型	80型
生产能力 Production Capacity(kg/h)	20-150	100-300	160-800	500-1500	600-2000
主速 Spindle speed(r/min)	5500	3800	3400	2800	2200
料粒度 Feeding Size(mm)	6	10	12	15	15
粉碎细度 Crushing fineness(mm)	60-150				
电机功率 Motor power(kW)	5.5	7.5	7.5	22	37
重量 Weight(kg)	280	360	600	780	1550
外形尺寸 Dimensions(L x W x H)(mm)	550 x 600 x 1250	600 x 700 x 1450	800 x 900 x 1550	1000 x 900 x 1680	1250 x 1100 x 2280



WFJ Super Efficient Pulverizer



✓ Main uses:

The machine consists of three parts: main unit, auxiliary and electric control box. It has various functions such as air selection, no screen, no net, uniform size and so on. The production process is continuous. The machine has reached the international advanced level and is widely used in the crushing of materials in the pharmaceutical, chemical, food and other industries.

✓ Working Principle:

The machine consists of three parts: main unit, auxiliary and electric control box. It has various functions such as air selection, no screen, no net, uniform size and so on. The production process is continuous. The machine has reached the international advanced level and is widely used in the crushing of materials in the pharmaceutical, chemical, food and other industries.

技术参数 Technical parameter

型号 Model	WFJ-15	WFJ-20	WFJ-30	WFJ-60	WFJ-80	WFJ-100
生产能力 Production capacity(kg/h)	10-100	30-150	50-500	100-800	150-1200	200-2000
进料粒度 Feeding granularity(mm)	< 10	< 10	< 10	< 10	< 10	< 10
出料粒度 Discharging granularity(目)	80-320	80-320	80-320	80-320	80-320	80-320
总功率 Total power(kW)	13.37	17.87	42.85	70.45	84.75	119
主轴转速 Spindle rotation speed(r/min)	6200	5500	3650	2900	2300	2000
概算重量 Estimated weight(kg)	950	1300	2000	3500	4500	5500
外形尺寸 Dimensions(L × W × H)	4200*1250*2700	4700*1250*2900	6640*1300*3960	7500*2300*4530	8200*2700*4800	8500*2800*4830

WFSJ High Efficiency Pulverizer



✓ **Main purpose:**

This machine is designed and developed by the principle of mixed dusting method. It is widely used in the crushing of materials in the pharmaceutical, food, chemical and other industries.

✓ **Working Principle:**

This machine belongs to a high-speed running machine, and the pulverized material is sheared by an adjustment blade to obtain pulverization. The machine can also select blades of different shapes and sizes according to different materials, and the particle size can be obtained by changing the screen or adjusting the speed.

✓ **Main feature:**

The structure of the machine is simple, the crushing chamber is convenient to disassemble and clean, and has the advantages of balanced operation, convenient movement, low noise, good smashing effect and the like.

技术参数 Technical parameter

型号 Model	主要外形尺寸 Main dimensions(mm)			生产能力 Production capacity (kg/h)	进料粒度 Feeding granularity (mm)	出料目数 Discharging mesh numbers (mm)	总功率 Total power (kW)	重量 Weight (kg)
	长(L)	宽(W)	高(H)					
GFSJ-8	1050	600	1600	10-100	≤ 10	5-80	3	150
GFSJ-16	1100	860	1600	30-200	≤ 10	5-80	7.5	250
GFSJ-32	1280	950	1600	50-400	< 15	5-80	11	400
GFSJ-48	1380	1200	1750	100-600	< 15	5-80	18.5	600

WFJ Herb Crusher



✓ Main Uses:

This unit is suitable for pharmaceutical, food, chemical, and other industries. It has various properties such as air-cooled and no screen. It is not limited by material viscosity, hardness and fiber, and can be crushed well for any material. The effect is especially suitable for pulverizing Chinese herbal medicines with fibers and materials with certain oiliness.

✓ Working principle

The machine consists of a hopper, a grading wheel, a pulverizing blade, a tooth solid, a pulverizing motor, a discharge port, a fan blade, a collecting box, a dust box, etc., and the material enters the pulverizing chamber from the hopper, and is rotated by a high-speed rotating blade. Crushing, adjusting the distance between the grading wheel and the grading plate to achieve the required material fineness, the high-speed rotating blade leaves the required material from the pulverizing chamber through the negative pressure wind to the hopper to continue the pulverization of the material that does not meet the requirements. The room is pulverized, and the dust is filtered and recovered by cloth bag or filter cartridge. The unit is designed according to the "GMP" standard. With simple structure, convenient operation and cleaning, low noise, high output, and the equipment is made of stainless steel. There is no dust flying during the crushing process.

技术参数 Technical parameter

型号 Model	WFJ-200	WFJ-300	WFJ-400
生产能力 Production capacity(kg/h)	10-150	20-300	50-500
进料粒度 Feeding granularity(mm)	≤5	≤12	≤15
粉碎粒度 Crushing granularity(目)	20-250	20-250	20-250
粉碎电机 Crushing motor(kW)	5.5	5.5	11
吸尘电机 Dust removal motor(kW)	1.5	1.5	3
重量 Weight(kg)	320	320	680
外形尺寸 Dimensions(L × W × H)	1350 × 920 × 1800	1400 × 1050 × 2050	1600 × 1150 × 2100



GFSJ High Efficiency Crusher



✓ Product introduction

The material enters the crushing chamber from the hopper through the spiral conveyor and is crushed by the high-speed rotating blade shear. The material is transported into the cyclone separator by the method of negative pressure air transport. The bag dust collector and the discharge material meet the requirements of the product.

✓ Main feature

The crusher consists of the main machine, the cyclone separator, the dust box and the induced draft fan, etc. The machine adopts the movable tooth plate and the fixed tooth ring screen ring material under impact shear, friction surface width. At the same time, when the movable tooth plate rotates at high speed, the strong air flow is generated, and the heat of the crushing chamber and the material flow out from the screen quickly. The control particle size can be decided by replacing the screen, and can be used to recover materials or two levels, no dust the machine is designed according to GMP standards. The whole machine is made of stainless steel material. The main engine is cooled by water. Production process without dust flying. Turbine crusher has the advantages of small volume, low energy consumption, stable transmission, low noise, high sealing degree, good self-cooling function, convenient disassembly and maintenance replacement parts. Easy maintenance and replacement of parts.



技术参数 Technical parameter

型号 Model	16型	32型	64型
电机功率 Motor power(kW)	7.5	11	18.5
生产能力 Production capacity(kg/h)	50-300	100-550	500-3000
可调转速 Adjustable speed(rpm)	1000-2400-4400	1000-2400-4400	2300
成品细度 Fineness of finished product(目)	12-120	12-120	12-120
外形尺寸 Dimensions(L x W x H)	900 x 800 x 1580	1200 x 950 x 1580	5500 x 1200 x 3250
重量 Weight(kg)	1242	1290	1595

WF Winnowing Dust Grinder



✓ Main purpose

Crusher is suitable for pharmaceutical, chemical, food, sugar, salt, rice, corn, starch, oats, flour, beans, peas, lentils, beans, spices, flavors, sweeteners, dried fruit, nuts, potato chips, broken bread, coffee, cocoa powder, potato powder, milk powder, onion, dehydrated vegetables, lotus seed, glucose, oat hulls, shell ginger, Chinese prickly ash, chili, pepper, naked oats, beans, staranise, cinnamon,) powder industry, such as continucus discharge is combining crushing and dust collection as a whole crushing equipment.

✓ Working Principle

Crusher by crushing host, cyclone separator, dust collection box and the induced draft fan and so on several parts, the machine adopts move bleand fixed gear ring mesh impact shear ring material, friction surface width. Activity of tooth plate rotating at high speed at the same time, the strong airflow, heat and material of the crushing chamber together soon cutflow from the screen. Control screen mesh size can be used to replace todecide, and can be recycled materials, with first class or second class. dust emission and desgired according to GMP standard. The whole machine is made of stanless steel materials. The host USES the watercooling. Production process without dust float in the sky. Turbine crusher has smnall vclume, low energy consumption, smooth transmission, low noise, good seal degree is high, the cold function, easy disassembling maintenarce switch parts. Convenient maintenance switch parts.

技术参数 Technical parameter

型号 Model	WF-20	WF-30	WF-40	WF-50	WF-60
电机功率 Power(kW)	5.5	7.5	11	15-18.5	22
齿盘转速 Tooth disk rotational speed	5000	4500	3800	3000	2200
粉碎细度 Crush size(mm)	20-120	20-120	20-120	20-120	20-120
产量 Production	10-150	30-300	40-600	60-800	100-1500
风机功率 Blower Power(kW)	1.5	2.2	2.2	4	5.5

SG Double Stick Crusher



✓ **Main use**

Two-roll urea mill is mainly used for granular urea grinding, but also can be used for other single fertilizer grinding. Widely used in compound fertilizer plant high nitrogen production, water flushing fertilizer production, water soluble fertilizer production and feed production.

✓ **Characteristic**

The two rolls rotate opposite to each other, squeezing, pressing and grinding the material at the same time, the crushing speed is fast, the thickness can be adjusted and uniform, the non-stick roller, simple operation, reliable, no wearing parts, no dust, the crushed material does not heat, no auxiliary dust removal equipment. The feed port is equipped with a block tooth roller. Even if there is a small amount of caking will not clog, continuous work. The equipment according to customer requirements, can be made into fixed and mobile.

技术参数 Technical parameter

型号 Model	粉碎能力 Crushing capacity	功率 Power	进料粒度 Feed size	细度 Fineness
SG-600	1~2吨/小时	11	5.0mm以下	20-40目
SG-800	2~4吨/小时	15	5.0mm以下	20-40目

FZH Square Cone Mixer



✓ Main purpose

This machine is suitable for mixing dry powder particles in pharmaceutical and other industries, and mixing powders and particles with good fluidity. The effect is remarkable.

✓ Main feature

The mixing tube has a unique structure, high mixing efficiency, no dead angle and even mixing

技术参数 Technical parameter

型号 Model	主要外形尺寸 Main dimensions(mm)			容积 Volume (L)	最大混合量(kg) Maximum mixing volume	混合转速 Mixing rotation speed (rpm/min)	机器重量(kg) Machine weight	总功率(kg) Total power
	L	W	H(回转高度)					
FZH-180	1700	1100	1750	180	90	3-12	300	1.5
FZH-300	1750	1300	1950	300	150	3-12	500	2.2
FZH-500	2200	1500	2150	500	250	3-12	800	3
FZH-1000	2800	1700	2350	1000	500	3-12	1200	4
FZH-1500	2960	2000	2540	1500	750	3-12	1600	5.5
FZH-2000	3400	2100	2750	2000	1000	3-12	2000	7.5
FZH-2500	3400	2350	3000	2500	1250	3-12	2400	11
FZH-3000	3700	2450	3100	3000	1500	3-12	2900	15
FZH-4000	4400	2850	3500	4000	2000	2-8	4100	18.5

W Double Cone Mixer



✓ Main purpose

This machine is suitable for the mixing of dry powder particles in pharmaceutical and other industries. It is effective in mixing powders and particles with good fluidity.

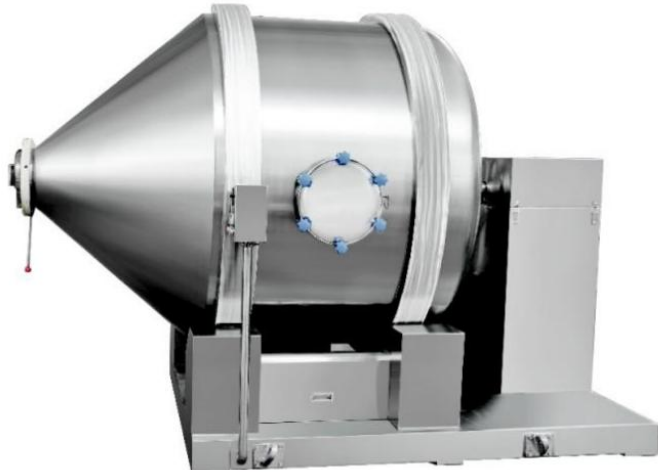
✓ Main feature

High mixing efficiency, no dead ends, and even mixing

技术参数 Technical parameter

型号 Model	W-180	W-300	W-500	W-1000	W-1500	W-2000	W-2500	W-3000	W-4000
全容积 Full volume(m³)	0.18	0.3	0.5	1.0	1.5	2	2.5	3.0	4.0
生产能力 Capacity(kg/次)	40	80	100	200	300	400	500	600	800
混合时间 Mixing time(min)	4-8	6-10	6-10	6-10	6-10	6-10	6-10	6-10	6-10
筒体转速 Barrel rotation speed(rpm)	12	12	12	12	12	12	12	7.8	7.8
功率 Power(kW)	1.1	1.1	2.2	4	4	7.5	7.5	7.5	11
尺寸 Dimensions (L×W×H)(mm)	1400×800×1850	1685×800×1850	1910×800×1940	2765×1500×2370	2960×1500×2480	3160×1900×3500	3386×1900×3560	4450×2200×3600	4750×2500×3680
回转总高度 Height of rotation(mm)	1850	1850	2450	3000	3100	3700	3790	3700	3730
重量 Weight(kg)	280	320	550	950	1020	1200	2040	2500	3200

YYH Roll Motion 1-dimensional Mixer



✓ Introduction

The latest research and development of a simple, efficient powder mixer, simple structure, easy to clean, is in line with "GMP" the powder mixing equipment.

✓ Feature

This machine is widely used in pharmaceutical, chemical, food, feed, fertilizer, pesticide and other industries in powder, granules mixed. Simple structure, easy to operate. Operation, the charging cylinder rotary motion around the center axis of doing ("the one-dimensional movement"), while the tube materials for three-dimensional motion, so the accuracy of the material can be mixed with two-dimensional, three-dimensional motion mixer comparable.

技术参数 Technical parameter

型号 Model	料筒容积(L) Volume	最大装料容积(L) Fed volume	最大装料量(kg/批) Fed weight	旋转转速(r/min) Spindle speed	电机功率(kW) Power	外形尺寸(mm)A × B × C × D Dimensions	总重量(kg) Weight
YYH-50	50	25	13	0-18	0.55	920 × 440 × 540 × 350	250
YYH-150	150	75	37	0-16	0.75	1140 × 610 × 900 × 445	320
YYH-300	300	150	75	0-14	1.1	1340 × 760 × 990 × 520	410
YYH-600	600	300	300	0-13	1.5	1615 × 960 × 1100 × 630	490
YYH-800	800	400	400	0-12	2.2	1730 × 1070 × 1200 × 700	560
YYH-1000	1000	500	500	0-12	2.2	1900 × 1120 × 1300 × 710	740
YYH-1500	1500	750	600	0-12	3	2050 × 1300 × 1480 × 830	850
YYH-2000	2000	1000	800	0-10	4	2280 × 1420 × 1620 × 910	1050
YYH-3000	3000	1500	1200	0-10	5.5	2505 × 1620 × 1830 × 1020	1380
YYH-4000	4000	2000	1500	0-8	5.5	3000 × 1800 × 2200 × 1300	1650
YYH-6000	6000	3000	2000	0-6	7.5	3400 × 2200 × 2500 × 1450	2300
YYH-8000	8000	4000	2600	0-6	11	3677 × 2300 × 2850 × 1630	3500
YYH-10000	10000	5000	4000	0-6	11	3800 × 2500 × 2950 × 1680	3800

EYH 2 dimensional Mixer



✓ Principle

The EYH series two-dimensional motion mixer is mainly composed of three parts: the drum, the swing frame and the frame. The drum is mounted on a swing frame and is supported by four rollers and axially positioned by two retaining wheels. Among the four supporting rollers, two of the driving wheels are dragged by the rotating power system to rotate the rotating cylinder; the swinging frame is driven by a set of crank swinging mechanism, the crank swinging mechanism is mounted on the frame, and the swinging frame is supported by the bearing. The assembly is supported on the rack.

✓ Features

The drum of the EYH series two-dimensional motion mixer can perform two movements at the same time, one for the rotation of the drum and the other for the swing of the drum with the swing frame. The mixture is rotated, inverted, and mixed with the drum in the drum, and the mixing motion of the left and right back and forth occurs with the swing of the drum. Under the joint action of the two movements, the material is fully obtained in a short time. the mix of. The EYH two-dimensional mixer is suitable for the mixing of all powder and granular materials.





EYH 2 dimensional Mixer



技术参数 Technical parameter

型号 Model	料筒容积(L) Barrel volume	装料容积(L) Loading volume	最大装料量(kg/批) Maximum loading volume	摇动/摆动次数 Oscillating times(r/min)	电机总功率(kW) Motor total power	外形尺寸(mm) Overall dimensions (X × Y × Z × Z1)	总重量(kg) Total weight	料桶重量(kg) Barrel weight
EYH-150	150	90	45	37	1.15	800 × 1050 × 1450 × 1340	190	50
EYH-300	300	180	90	17.5/11	1.3	900 × 1350 × 1550 × 1400	340	60
EYH-600	600	360	180	15/9	3	1150 × 2050 × 2000 × 1850	1150	140
EYH-800	800	480	240	11/6.4	3	1300 × 2010 × 2150 × 2000	1600	200
EYH-1000	1000	600	300	8/5.4	3	1300 × 2200 × 2000 × 1800	1700	240
EYH-1500	1500	900	450	8/5	4.4	1500 × 2550 × 2150 × 2008	2000	320
EYH-2000	2000	1200	600	8.3/4.7	5.2	1660 × 2750 × 2255 × 2120	2600	430
EYH-3000A	3000	1800	900	7/4.5	8	1850 × 3100 × 2550 × 2350	3500	620
EYH-4000A	4000	2400	1200	6.5/3.8	9.5	2010 × 4300 × 2760 × 2570	4100	700
EYH-6000A	6000	3600	1800	5.6/3.1	13	2200 × 5100 × 3380 × 3050	6100	1100
EYH-8000A	8000	4800	2400	4.5/2.7	13	2400 × 5750 × 3480 × 3210	7900	1450
EYH-10000A	10000	6000	3000	3.8/2.3	18.5	2400 × 6300 × 3800 × 3420	9500	1650
EYH-12000A	12000	7200	3600	3.8/2.3	18.5	2890 × 6864 × 4470 × 4070	13500	2000
EYH-15000A	15000	9000	4500	3.2/2	22	3035 × 7100 × 4600 × 4350	15000	2500
EYH-20000A	20000	12000	6000	3.2/1.9	30	3295 × 7500 × 5000 × 4500	18000	3100



SBH 3 dimensional Movement Mixer



✓ Main purpose

SBH series multi-directional motion mixer is a material mixer widely used in pharmaceutical, chemical, metallurgy, food, light industry, agriculture and other industries. The machine can mix powder or granules very evenly to achieve the best results after mixing.

✓ Main feature

The material is added to the mixing tank through the feeding machine or the vacuum feeding system. The mixing barrel space is crossed and perpendicular to each other. The main and driven shafts connected by the Y-type universal joint support the mixing barrel to make the three-dimensional space. The unique translation, inversion and inversion movements accelerate the flow and diffusion during the mixing process and avoid the segregation and accumulation of the specific gravity of the material caused by the centrifugal force of the general mixer, so that the material can be reached in a short time. The ideal blending effect.

技术参数 Technical parameter

型号 Model	SBH-5	SBH-20	SBH-50	SBH-100	SBH-200	SBH-400	SBH-600	SBH-800	SBH-1000	SBH-1500
混合桶容积 Mixing barrel volume(L)	5	20	50	100	200	400	600	800	1000	1500
最大装料容积 Maximum loading volume(L)	4	17	40	85	170	340	500	680	850	1270
最大装料重量 Maximum loading weight(kg)	4	15	40	80	100	200	300	400	500	750
主轴转速 Spindle rotation speed(rpm)	3-20	3-20	3-20	3-15	3-15	3-15	3-10	3-10	3-10	3-8
电机功率 Motor power(kW)	0.37	0.55	1.1	1.5	2.2	4	5.5	7.5	7.5	11
整机重量 Machine weight(kg)	90	100	200	650	900	1350	1550	2500	2650	4500
外形尺寸 Dimension(L × W × H)(mm)	900 × 700 × 650	970 × 780 × 700	1200 × 1100 × 1200	1360 × 1500 × 1530	1800 × 1600 × 1700	2200 × 1900 × 1850	2400 × 2100 × 2050	2600 × 2500 × 2800	2800 × 2600 × 2800	3400 × 3200 × 3100

GHJ-V Hingh Efficient Blender



✓ Overview

This machine is suitable for the mixing of two or more dry powdery and granular materials in the pharmaceutical, chemical, food and other industries. The machine has a unique structure, high mixing efficiency, no dead angle, stainless steel material, polished inner and outer walls, beautiful appearance, uniform mixing, wide application surface, and can be equipped with a forced agitator according to user requirements. The powder, block, and materials containing a certain amount of water are mixed.

技术参数 Technical parameter

型号 Model	GHJ-V-0.18	GHJ-V-0.3	GHJ-V-0.5	GHJ-V-1.0	GHJ-V-1.5	GHJ-V-2.0	GHJ-V-2.5	GHJ-V-3.0	GHJ-V-4.0	GHJ-V-5.0	GHJ-V-6.0
生产能力 Productive capacity (kg/time)	72	120	200	400	600	800	1000	1200	1600	2000	2400
真空上料机型号 Vacuum charger mode	ZKF-1	ZKF-1	ZKF-1	ZKF-2	ZKF-3	ZKF-3	ZKF-3	ZKF-4	ZKF-4	ZKF-4	ZKF-6
进料时间 Feeding time (min)	3-5	3-5	4-6	6-9	6-10	8-13	8-15	8-12	10-15	15-20	18-25
混合时间 Mixing time (min)	4-8	6-10	6-10	6-10	6-10	6-10	6-10	8-12	8-12	8-12	8-12
全容积 Full volume(m ³)	0.18	0.3	0.5	1.0	1.5	2.0	2.5	3.0	4.0	5.0	6.0
搅拌速度 Mixing speed (r/min)	12	12	12	12	12	12	12	10	10	10	10
电机功率 Motor power (kW)	1.1	1.1	2.2	4	4	5	7.5	7.5	11	15	18.5
回转高度 Rotation height (mm)	1580	1760	2400	2840	3010	3240	3680	3700	4350	4800	5300
重量 Weight (kg)	280	320	550	950	1020	1600	2040	2300	2800	3250	3850

CH-VI Force Stirring Mixer



✓ Main purpose

Absorbing foreign company to introduce new technology developed forced mixing type mixer V1. For the pharmaceutical, food, chemical industry materials mixed.

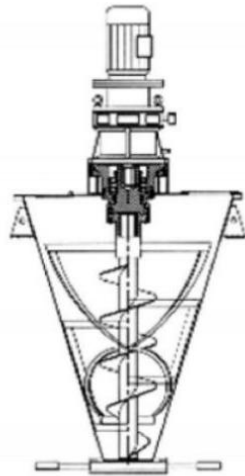
✓ Feature

Powder on the smaller machine, clot or two more after the powder body, the material can contain a certain mixture of water. Such as phase and trace additives can also be achieved mixed results (ie addition of a few ingredients mixed).

技术参数 Technical parameter

型号 Model	生产能力 (kg/h) Capacity	全容积(L) Revolution	混合时间 Mixing time (min)	功率千瓦 Power (kw)	筒体转速 Volume speed (rpm)	搅拌转速 Mixing speed (rpm)	外形尺寸 L x W x H Dimensions(mm)	整机重量 Weight (kg)
VI-50	15	0.05	4-10	1.1 × 0.55	12	500	845 × 350 × 950	150
VI-300	80	0.3	4-10	2.2 × 0.55	12	500	1880 × 680 × 1700	320
VI-500	150	0.5	4-10	1.1 × 2.2	12	500	2500 × 1350 × 2450	480
VI-1000	300	1	6-10	4 × 2.2	12	500	2800 × 1350 × 2700	950
VI-1500	400	1.5	6-10	4 × 2.2	12	500	3190 × 1600 × 3000	1020
VI-2000	850	2	6-12	5.5 × 2.2	12	350	3800 × 1900 × 3310	2000
VI-2500	1200	2.5	6-12	7.5 × 3	12	350	3990 × 1990 × 3790	2040
VI-3000	1500	3	6-15	7.5 × 3	12	350	4200 × 200 × 4100	2500
VI-4000	1800	4	6-15	4 × 11	12	300	4300 × 1080 × 4200	3000
VI-6000	2500	6	6-15	5.5 × 15	12	300	4500 × 2200 × 1380	3800

DLG Single Spiral Cone Mixer



✓ Working principle

The machine through the single-stage cycloidal reducer connecting screw with single screw with a blade, from the same speed, work, center of the spiral cylinder material from bottom totop, and ribbon would powder from down to up along the spiral cylinder arm, between material produce shear mixing convection diffusion, because the screw tape blade so can make liquid or materials with a certain viscosity, non-stick arm has a good adaptability.

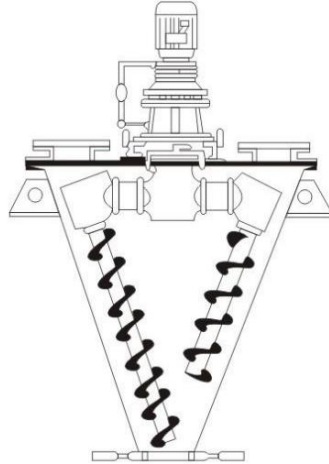
✓ Application scope

Widely used in chemical industry, ceramic powder, pesticides.dyes, food, pigment, glaze, feed, building materials, rare earth andother powder mixed with powder (solid -solid). Such chemical machinery for wide adaptability, mixed materials for heat-sensitive materials will not cause overheating, don't pressure feedback and grinding particle materials, the mixture will not produce specific grvity and granularity, are different points crumbs segregation phenomenon.

技术参数 Technical parameter

型号 Model	全容积(m³) Totalcolume	装载系数 Loading coefficient	电机功率 Power (mesh)	最大直径 Diameter (mm)	总高度(mm) Total height
DLG-0.1	0.1	0.4-0.6	1.5	708	1498
DLG-0.3	0.3	0.4-0.6	3	990	2095
DLG-0.5	0.5	0.4-0.6	4	1156	2338
DLG-1	1	0.4-0.6	7.5	1600	2775
DLG-1.5	1.5	0.4-0.6	11	1780	3146
DLG-2	2	0.4-0.6	11	1948	3424
DLG-3	3	0.4-0.6	15	2175	3758
DLG-4	4	0.4-0.6	18.5	2435	4446

SHJ Double Spiral Cone Mixer



✓ Main purpose

The machine is a new type of high-efficiency, high-precision mixing equipment. It is widely used in the mixing of various powders in the pharmaceutical, chemical, feed and other industries. It is especially suitable for the mixing of materials with large specific gravity.

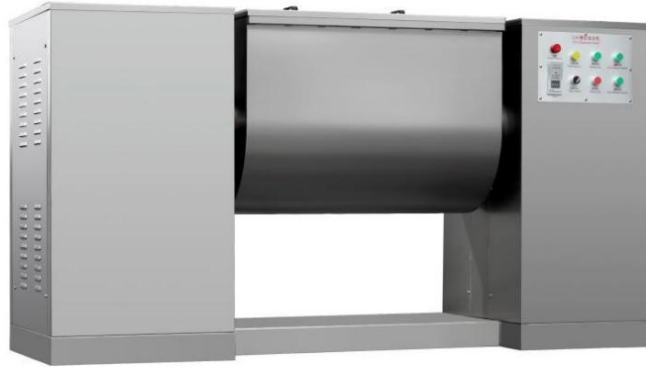
✓ Feature

The machine rotates and has a set of motor and cycloidal pinwheel reducer. The mixing range is large and the mixing speed is fast.

技术参数 Technical parameter

型号 Model	容积(L) Volume	最大混合量(kg) Maximum mixing volume	混合转速 Mixing rotation speed (rpm/min)	机器重量(kg) Machine weight	总功率(kg) Total power
SHJ-300	300	150	2/68	400	3
SHJ-500	500	250	2/68	550	3
SHJ-1000	1000	500	2/57	1200	4
SHJ-2000	2000	1000	2/57	1500	5.5
SHJ-3000	3000	1500	2/57	2300	7.5
SHJ-4000	4000	2000	2/57	2800	11
SHJ-6000	6000	3000	2/57	3600	15
SHJ-10000	1000	5000	2/57	4200	18.5
SHJ-15000	15000	7500	2/57	4900	22
SHJ-20000	20000	10000	2/57	5800	37
SHJ-30000	30000	15000	2/57	7000	45

CH Tank Mixer



✓ **Main purpose**

This machine is stainless steel horizontal trough mixer, used for mixing powder or paste materials in pharmaceutical, chemical and food industries

✓ **Principle and features**

S type agitating paddle is rotated, through mechanical driving, which pushes the material turn repeatedly and mix uniformly. operate with electrical control, it can set mixing time to realize automatic stop and electric discharge upon expiration, thus improving the mix quality of each batch of material and realizing the high homogeneous mixing

技术参数 Technical parameter

型号 Model	CH-50	CH-100	CH-150	CH-200	CH-300	CH-400	CH-500	CH-600	CH-1000
工作容积 Working volume(L)	50	100	150	200	300	400	500	600	1000
主轴转速 Spindle rotation speed(r/min)	24	24	24	24	24	24	24	24	24
混合周期 Mixing cycle(min)	5-20	5-20	5-20	5-20	5-20	5-20	5-20	5-20	5-20
主电机功率 Main motor power(kw)	1.1	3	4	5.5	7.5	7.5	11	11	15
倒料电机功率 Dumping motor power(kw)	0.75	0.75	1.1	1.1	1.5	1.5	2.2	2.2	4
机械重量 Machine weight(kg)	280	350	410	450	520	580	680	750	1200
外形尺寸 Dimensions(mm)	980 × 420 × 800	1100 × 440 × 900	1280 × 600 × 1100	1400 × 600 × 1200	1850 × 700 × 1200	2100 × 750 × 1250	110 × 440 × 900	1280 × 600 × 1100	2280 × 1100 × 1500

WCH Double Pulp Mixer



✓ Working principle

This machine is of horizontal trough type double pulp mixing machine, mainly used in pharmaceutical industry in different proportions of mixing the dry or wet powder material, and do not produce in the process of mixing material dissolved volatile or deterioration. This machine is also suitable for chemical, food and other industrial department mixing different advocate complementary material, it is suitable for mixed semi-solid liquid materials or viscosity is too large. Structure features: this machine is the machine frame, transmission system spirit. smooth operation, stirrer and material contact work adopt stainless steel, has the good corrosion resistance, can maintain the quality of mixed materials, no pollution, no discoloration. Transmission mechanism mainly adopts round pot, pot screw, gear transmission, no excessive noise when using, and there is plenty of oil, can get good lubrication, and improve the service life of machine. This machine use electrical equipment control manipulation, easy to operate, adopt automatic inching down material, reduce the labor intensity of the operators. Applicable to the pharmaceutical, chemical, food industries, mixing or paste materials. The machine through mechanical rotation. make double S type impeller rotation, reciprocating turn, promote material mixing.

技术参数 Technical parameter

型号 Model	WCH-100	WCH-200	WCH-300	WCH-500	WCH-600
工作容积 Working volume(L)	100	200	300	500	600
电机功率 Motor power(kW)	4	5.5	5.5	7.5	11
搅拌转速 Stirring speed(r/min)	24	24	24	24	24
倒料角度 Pour material angle(度)	45	45	45	45	45
重量 Weight(kg)	450	650	800	1000	1300
外形尺寸 Dimensions(mm)	1600 × 600 × 1100	1800 × 700 × 1200	2000 × 800 × 1200	2200 × 900 × 1300	2300 × 950 × 1400



ZGH High Speed Mixer



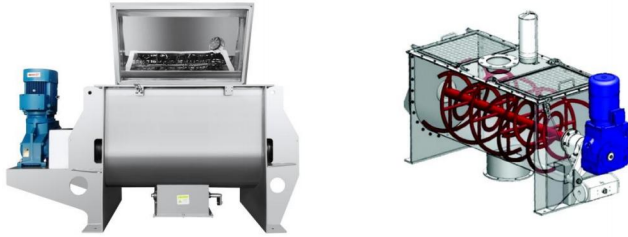
- ✓ Due to the action of centrifugal force, the feed blade at the bottom of ZGH vertical high speed mixer will feed the bottom material continuously upward along the cylinder wall, and the upper material will fall down from the center, making the material circulation form a vortex. High speed crushing leaf slurry will completely break the bulk material sent by the feeding leaf slurry. Because of the high speed rotation of the above two kinds of leaf pulp, so can make the material in a short time to achieve the purpose of uniform mixing, the mixing speed and uniform speed is a variety of domestic mixers can not achieve, mixed materials in the middle of no granular, uniform mixing speed up to 100 percent; Open the discharging valve, fast discharging speed, easy cleaning equipment.
- ✓ ZGH type vertical high speed mixer material contact are made of non-embroidered steel, in the mixing process will not produce volatilization, deterioration and loss of materials.
- ✓ ZGH type vertical high speed mixer is suitable for mixing dry and wet materials of different proportions evenly, especially for mixing chicken essence, pharmaceutical powder, beverage powder and other complex mixed materials. It has been widely used in the mixing of chicken essence and other condiments, pharmaceutical, chemical raw materials powder.
- ✓ ZGH type vertical high speed mixer is composed of bottom feed pulp and high speed crushing pulp. The bottom material is continuously fed up along the wall of the cylinder. The high-speed crushing leaf slurry will completely break the material sent by the material and leaf slurry, so that the material circulation forms a vortex shape, and the purpose of evenly mixing the material is achieved in a short time.

技术参数 Technical parameter

型号 Model	ZGH-350	ZGH-400	ZGH-850
工作容积 Working volume(L)	350	400	850
搅拌重量 Mixing weight(kg/次)	150	200	400
装机功率 The installed power(KW)	7.37	8.07	10.87
重量 Weight(kg)	600	650	850
外形尺寸 Dimensions(mm)	1500 × 1090 × 1200	1500 × 1090 × 1300	1718 × 1320 × 1400



WLDH Horizontal Ribbon Mixer



✓ Structure and features

By the u-shaped containers, ribbon mixing blades and transmission parts; U ChangTi cylinder structure, ensure the be mixed materials (powder, semiliquid) in the cylinder body of the small resistance movement. Positive and negative rotation ribbon is installed on the same horizontal axis, forming a low power efficient mixed environment, spiral strip blades made of double layer or three layer, the outer spiral material from two side to the central pool, on both sides of the inner spiral material from the central to transport, can make the material more vortices in the flow. Accelerate the mixing speed, improve mixing uniformity.



✓ Discharging mode

Big open structure, using pneumatic materials has the advantages of fast discharging, no residual: Adopt high fineness of materials or semiliquid material using manual butterfly valve or pneumatic butterfly valve. Configurable heating or cooling jacket Heating mode has electric heating and heat conduction oil heating in two ways. Cooling process can be directly to infuse water jacket and clip hot swap area is large, the cooling speed. Small type mixer adopts reducer direct mode, simple structure, high operating reliability, maintenance is convenient. Large number mixer adopts pulley drive the cycloid speed reducer drive, belt transmission of elastic connection has the advantage of the overload protection when driving part.

✓ Application Scope

Used in pesticides, veterinary drugs, food, chemical, biological, breeding industry, ceramics, refractory material, plastic, compound fertilizer, such as solid-solid (powder and powder) solid-plasma (i.e., powder and rubber slurry) mix, specifically adapted to viscous material mix.

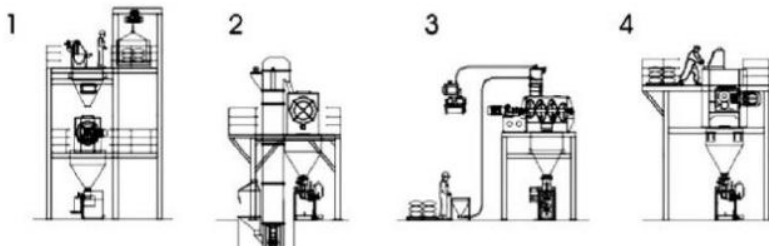
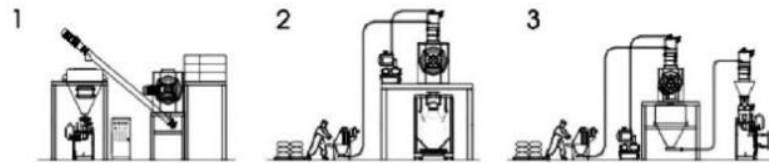
技术参数 Technical parameter

型号 Model	有效容积(L) Volume	总功率(kW) Power	转速(r/min) Speed	外形尺寸(mm) Dimension	设备重(Kg) Weight
WLDH-100	50	2.2	58	1190 × 740 × 770	380
WLDH-150	80	3	53	2030 × 630 × 980	450
WLDH-300	150	4	53	2320 × 730 × 1130	560
WLDH-500	300	7.5	49	2800 × 920 × 1320	680
WLDH-1000	600	11	42	3180 × 1020 × 1550	1200
WLDH-1500	800	15	42	3310 × 1120 × 1640	1600
WLDH-2000	1000	18.5	42	3750 × 1290 × 1820	2200
WLDH-3000	1500	18.5	37	4220 × 1400 × 1990	3300
WLDH-4000	2000	22	37	4220 × 1500 × 2100	3800
WLDH-5000	3000	30	31	4700 × 1610 × 2260	4300
WLDH-6000	3500	37	31	4420 × 2150 × 2470	5500
WLDH-8000	4200	45	27	5520 × 2360 × 2720	6800
WLDH-10000	5000	55	27	5720 × 2520 × 2840	7900
WLDH-12000	6000	55	23	5840 × 2850 × 2940	8800
WLDH-15000	8000	75	23	6000 × 3040 × 3050	9500
WLDH-20000	10000	90	19	6100 × 3300 × 3150	13500
WLDH-30000	15000	110	17	6500 × 3500 × 3500	15000

Contents



流程示意图 Flow chart



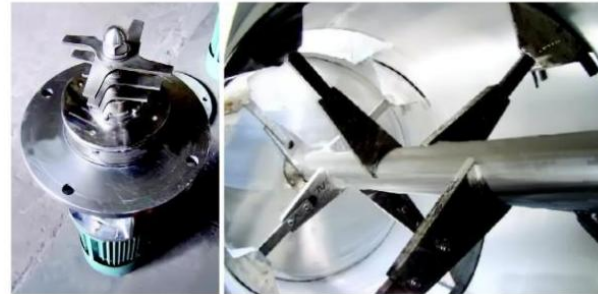
- ◆ Configuration 1: Use the ton bag material, crane hoisting, combined dust collector directly feeding;
 - ◆ Configuration 2: The erection of multilayer platform, artificial bag feeding, mixed material with tons of packing machine;
 - ◆ Configuration 3: The most simple use of mixing equipment, direct feeding directly discharge, configuration of forklift loading and unload.
-
- ◆ Configuration 1: the use of artificial feeding platform, material mixing spiral ascending into the finished product warehouse then uncerpackaging equipment;
 - ◆ Configuration 2: using vacuum feeding way, ground feeding, mixed material with tons of packing machine;
 - ◆ Configuration 3: multistage vacuum conveying, mixing after storage and then packaging;
-
- ◆ Configuration 1: Design of multilayer operation platform good sadder feeding, feeding, storage, mixing, storage, packag in cone tower structure;
 - ◆ Configuration 2: the bucket type lifting machine feeding. mixing storage, packing into;
 - ◆ Configuration 3: vacuum feeding machine feeding, mixing. storage. packaging, avertically intograted structure.
 - ◆ Confiquarion 4: rificialfeeding, mixing. slorage, packaging, avertically integrated structure;

LDH Horizontal Ploughshare Mixer



✓ Main uses

Type LDH colter mixer (hereinafter referred to as the mixing machine) is made up of the company developed a new type, efficient powder mixing equipment. This machine is widely used in chemical, pharmaceutical, pesticide, plastic, rubber, chemical fertilizer, building materials, concretead mixtures, foodstuff, monosodium glutamate, salt, feed additives, dye, metallurgy, mining and other industries of solid - solid (that is, the powder mixed with powder), solid - liquid (i.e, adding liquid powder).and wet granulation, drying, concentration and other composite technology. It is a kind of strong adaptability, wide application ofmultifunctional mixing equipment;



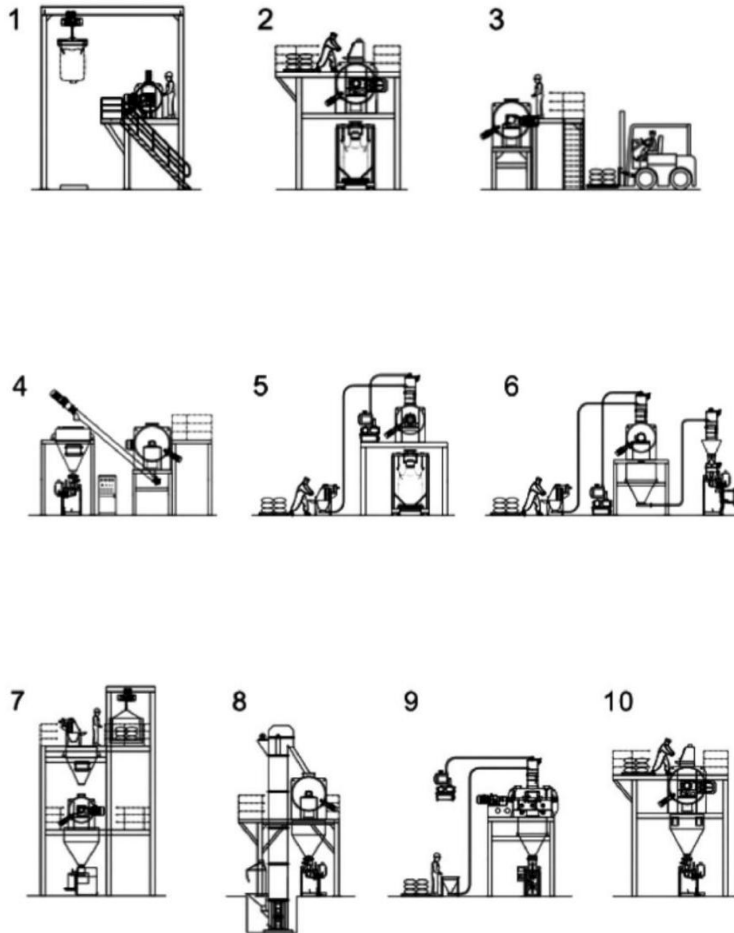
技术参数 Technical parameter

型号 Model	LDH-0.1	LDH-0.3	LDH-0.5	LDH-1	LDH-2	LDH-4	LDH-6	LDH-10	
全容积 Totalcolume(m ³)	0.1	0.3	0.5	1	2	4	6	10	
装填系数 Loading coefficient	0.3-0.6	0.3-0.6	0.3-0.6	0.3-0.6	0.3-0.6	0.3-0.6	0.3-0.6	0.3-0.6	
混合时间 Mixing time(min)	4-8	4-8	4-8	4-8	8-15	8-15	8-15	8-15	
物料细度 Fineness of the material	40-850	40-850	40-850	40-850	40-850	40-850	40-850	40-850	
功率 Power(kw)	犁刀 Plow knife	3	5.5	7.5	11	15-18.5	22	30-3	37-45
	飞刀 Flying knife	1.5×2	1.5×2	1.5×2	1.5×2	1.5×3	1.5×4	1.5×5	1.5×5
设备自重 Weight(kg)	450	760	860	1520	2110	2120	6800	7200	
外形尺寸 Dimensions(L×W×H)	1850×750 ×720	2230×1000 ×1200	2550×1120 ×1250	3000×1230 ×1500	3900×1500 ×1700	4400×1850 ×2200	5200×2000 ×2300	6100×2500 ×2600	

✓ Working Principle

After mixing machine start coulter by coulter axis rotation, made material along barrel radial circumferential turbulent, at the same time on bothsides of the material along the coulter surface normal direction. W henthrown and materials for weeks to turbulent flows through fly knife group.by high speed rotating rapidly and effectively scatter. Materials in the compound under the action of the coulter and throwing knives, constantly more fold, diffusion, in a short period of time to achieve uniform mixing, mixed with high precision. For the material that need tobe mixed solid - liquid, mixed liquid through spray device evenly sprayed on the cylinder body movement of the material.

LDH Horizontal Ploughshare Mixer



- ◆ Configuration 1: Use the ton bag material, crane hoisting, combined dust collector directly feeding;
- ◆ Configuration 2: The erection of multilayer platform, artificial bag feeding, mixed material with tons of packing machine;
- ◆ Configuration 3: The most simple use of mixing equipment, direct feeding directly discharge, configuration of forklift loading and unloading
- ◆ Configuration 4: the use of artificial feeding platform, material mixing spiral ascending into the finished product warehouse, then under packaging equipment;
- ◆ Configuration 5: using vacuum feeding way, ground feeding, mixed material with tons of packing machine;
- ◆ Configuration 6: multistage vacuum conveying, mixing after storage, and then packaging;
- ◆ Configuration 7: Design of multilayer operation platform. foods ladder feeding. feeding, storage. mixing. storage. packaging, one tower structure;
- ◆ Configuration 8: the bucket type lifting machine feeding, mixing, storage, packing into;
- ◆ Configuration 9: vacuum feeding machine feeding, mixing, storage, packaging, a vertically integrated structure;
- ◆ Configuration 10: artificial feeding, mixing, storage, packaging, a vertically integrated structure;



WLSH Horizontal Double Spiral Ribbon Mixer



✓ Application field

Food, feed, fertilizer, building materials, refractory materials, agriculture, instant noodles, Chinese herbal medicine, chemical additives, feed additives, titanium dioxide, calcium carbonate, ethyl cellulose, organic fertilizer, nutrition soil, fertilizer, insulation mortar, wear-resisting flooring, cement, gypsum putty, configuration, bentonite, copper oxide, reduction iron etc.

✓ Working Principle

The product can be mixed powder and powder, powder and granule, especially the mixing proportion or the size difference between the material has good mixing effect; the device in the U shape tube distribution in twin two rows of different turning leaves, when the material radial, circumferential and axial three to throw movement the formation of cross circulation, shear mixing of multiple effects, to achieve uniform mixing in a very short time, high mixing efficiency, low energy consumption, small pollution.

The mixing speed is high and the batch mixing of general 2~3in adapt to the special use and assembly in production. The spiral shaft assembly is the main component of double shaft mixer, the system consists of left and right rotary parts to the screw shaft, a bearing seat a bearing sleeve, a bearing cover, gear, sprocket, oil cup, blade.

技术参数 Technical parameter

型号 Model	设备容积 Volume (L)	生产容积 Volume (L/Batch)	混合量(Kg/Batch) Mixing quantity	功率(kW) Power	主轴转速 Speed (R/min)	外形尺寸(mm) Dimension	重量(Kg) Weight
WLSH-100	100L	30 ~ 60	<100	3	60	1200*700*700	550
WLSH-200	200L	50 ~ 120	<150	4	60	1500*850*950	750
WLSH-500	500L	150 ~ 300	<300	7.5	41	1600*1600*1200	1500
WLSH-1000	1000L	300 ~ 600	<600	11	41	1700*1800*1500	2100
WLSH-2000	2000L	500 ~ 1200	<1200	15	33	2000*2500*1700	3200
WLSH-4000	4000L	1000 ~ 2500	<2500	30	33	2500*2800*2300	5000
WLSH-6000	6000L	2000 ~ 3500	<3000	45	28	2800*3000*2500	6200
WLSH-10000	10000L	3000 ~ 6000	<5000	75	28	3000*3600*3000	9500
WLSH-15000	15000L	5000 ~ 9000	<8000	90	23	3600*4500*3200	14000
WLSH-20000	20000L	6000 ~ 12000	<10000	110	23	3800*4800*3500	18500



MLX Continuous Mixer



Main uses

Continuous powder mixing equipment products, very suitable for a large number of materials and the fixed process under continuous work. The material is stirred in the eddy current range, that is to say in the fluidized bed produce mechanical force or slag heap. The device is well suited for homogeneous mixing for the protection of the material, pre processing solid mixture, solid-liquid mixing and thickening stir. According to the user's unique work demand personalized design and manufacture of powder mixing equipment.

Standard residence time in 15 seconds to 30 minutes. For the special mixing equipment more reverse hybrid operation. Prolonged residence time through Step special mixing equipment. To meet the multiple observation door for easy cleaning.

The material loading amount to a maximum of 70%. According to the characteristics of the product manufacturing cutter head type. From high quality stainless steel to

The machine structure anti dust and anti explosion. On the basis of GMP design. Energy saving.



技术参数 Technical parameter

型号 Model	容积 Volume (L)	筒体尺寸 Size of tube(mm)	生产能力 (m ³ /h) Throughput	功率(kW) Power	转速 Speed (r/min)	外形尺寸(mm) Dimension	重量(Kg) Weight
MLX-4000	4000L	1100 × 4000	50-100	45	50	6500 × 1300 × 1800	5000
MLX-6000	6000L	1300 × 4500	80-200	70	42	7500 × 1500 × 2000	8000
MLX-8000	8000L	1400 × 5200	100-300	90	33	8500 × 1600 × 2200	11000
MLX-10000	10000L	1500 × 6000	150-400	110	28	10000 × 1800 × 2500	14000



WZ Weightless Biaxial Paddle Mixer



✓ **Descriptions**

This series machine takes a strong and high effective mixing as its features. The two mixing axes rotate reversely at an identical revolution in the horizontal drum body. The paddles specially distributed on the axle ensure that the material moves radically, circulatingly, and axially, so as to form a compound motion, and in an extremely short time, the material is mixed evenly.

✓ **Features**

The equipment can run in an enclosure, with high precision, high speed, low energy consumption. Pneumatically, electrically and manually discharging method. The atomizing device can be distributed on the cylinder cover to realize the solid-liquid mixing.

✓ **Application Scope**

Chemicals, detergent, fertilizer, feedstuff, additive, wheat flour, milk powder, perfume, micro ingredient, coffee, gourmet powder, salt, plastic and all kinds of pulp, powder material.



技术参数 Technical parameter

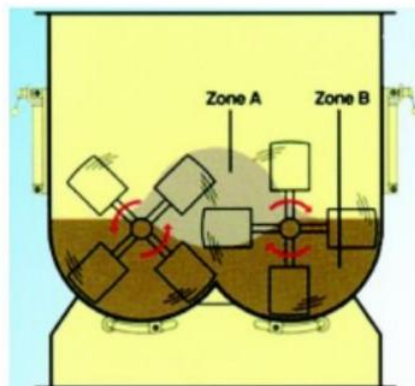
型号 Model	WZ-0.1	WZ-0.3	WZ-0.5	WZ -1	WZ -2	WZ -3	WZ -4	WZ -6
一次混合 Mixed amount/batch(kg)	40-60	120-180	200-300	400-600	800-1200	1200-1800	1600-2400	2400-3600
装机功率 Equipped power(kW)	3	4-5.5	5.5-7.5	7.5-15	15-18.5	18.5-22	22-30	30-37
设备重量 Dead weight(kg)	440	970	1080	2100	2740	3800	5100	6600



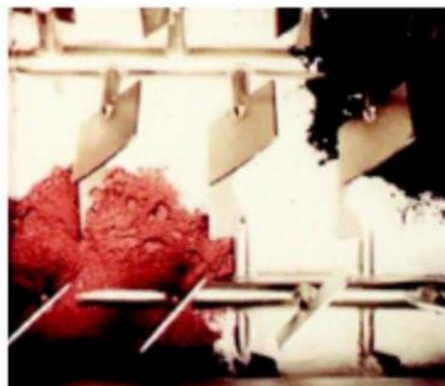
WZ Weightless Biaxial Paddle Mixer



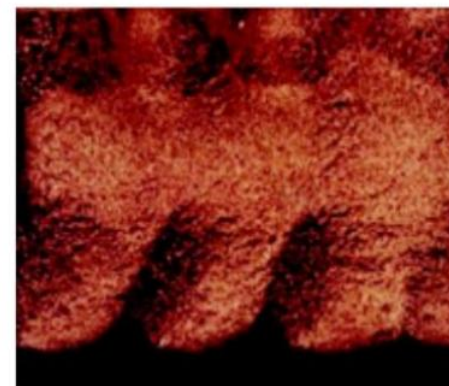
The mixing process is mild, and the variable range of filling quantity is large (0.4-1); High mixing uniformity, no segregation; Fast mixing speed and short cycle (30-120 seconds/batch).



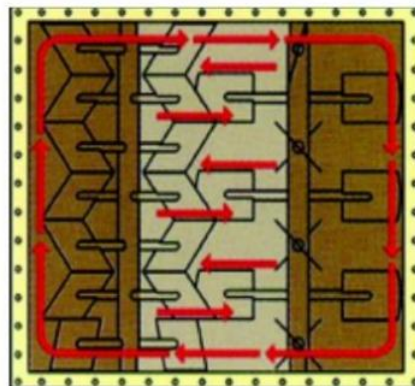
工作原理
Working principle



混合开始时
Beginning of mixing



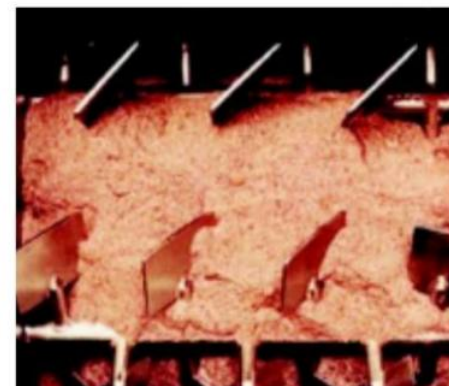
5秒后
After 5 seconds



工作原理
Working principle



2秒后
After 2 seconds



10秒后
10 seconds later



GHL Wet Type Mixer



✓ Main feature

The machine adopts horizontal cylinder structure, reasonable structure, inflatable seal drive shaft, can be switched into water during cleaning, fluidized granulation, granulated approximately spherical, and good fluidity. 25% less binder than traditional process, short drying time, 2 minutes dry mixing per batch, granulation 1-4 minutes, 4-5 times better than traditional process. dry-wet mixing in the same closed container - Granulation. process reduction, and compliance with GMP regulations. The entire operation has strict safety protection measures.



技术参数 Technical parameter

型号 Model	GHL-50	GHL-150	GHL-200	GHL-250	GHL-300	GHL-400
容量 Volume(L)	50	150	200	250	300	400
产量 Output(kg/批)	15	50	80	100	130	200
搅拌速度 Mixing speed(r/min)	300/210	270/180	270/180	188/130	160/110	120/85
搅拌功率 Mixing power(kW)	4/5.5	9/11	11/14	11/14	11/14	15/17
切割功率 Cutting power(kW)	1.5/2.2	2.4/3	3.3/4	3.3/4	4.5/5.5	6.5/8
切割速度 Cutting speed(rpm)	1440/2900	1440/2900	1440/2900	1440/2900	1440/2900	1440/2900
工作时间 Working time(min)	8-15	8-15	8-15	8-15	8-15	8-15
颗粒大小 Granule size(Mesh)	20-80	20-80	20-80	20-80	20-80	20-80

工艺流程图 Flow chart





XZL Rotary Granulators



✓ Main purpose

This machine is mainly used in the pharmaceutical, chemical, food and other industries. The slightly moist powder is crushed into granules, and the waste pieces and dry pieces can be pulverized and crushed into granules.



技术参数 Technical parameter

型号 Model	250	300
筛筒内径 Diameter of cylindrical screen(mm)	250	300
碾刀尺寸 Size of grinding blade(mm)	250	300
制粒直径 Pellet diameter(mm)	5.5	7.5
重量 Weight(kg)	350	400
电机功率 Motor power(kW)	5.5	7.5
生产能力 Production capacity(kg/h)	140-200	140-400
外形尺寸 Dimensions L x W x H(mm)	1400 x 650 x 1300	1500 x 700 x 1500

✓ Working principle

This machine consists of a set of relative rotating grinding blade, by stainless steel sieve cylinder hole slightly wet grinding to squeeze into particles, can also be crushed waste and dry grinding block and squeeze into particles. This machine is suitable for pharmaceutical industry, at the same time can also be applied to food, electronics and other industries. The machine in the material contact parts are all made of stainless steel, the body shell with stainless steel closed, cleaning and maintenance is convenient. This machine is suitable for high viscosity material, other machine difficult granulating, the machine can be used.

GK Dry Granulating Machine



✓ **Main purpose**

Pharmacy: pressed granule, fill in capsule granule etc
Food: food manufacturing granule, flavor granule etc.
Plastic: all kinds of plastic forming granule .
Chemical: catalyst, pigment, detergent particles.

✓ **Working principle**

Using the water of crystallization in the materials, powder granules are directly related to the new equipment, reasonable structure. stable and reliable performance, easy cleaning and maintenance. The particles on the system can be pressed tablet, granule, filling capsules, etc. Mainly used in pharmaceutical, food, chemical industry and other industries granulation. Especially suitable for wet unsolvable matter grain granules

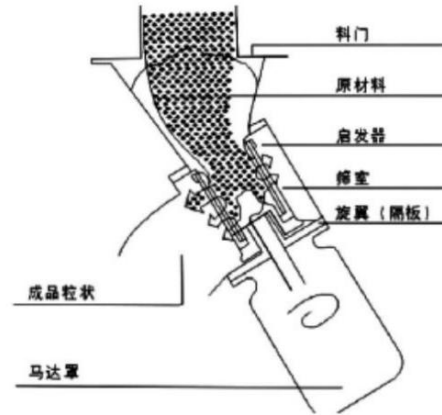
The dry powder is average in density with good solubility and high granulation rate. It has special material transmission structure which can guarantee sufficient material transmission. The roller is cooled by water cycle to assure the material won't stick to the roller.

There is no need for wetting agent like water and ethanol as well as double heating and drying. The equipment adopts the advanced electro hydraulic, so it is easy and reliable to operate under high automatization. It is operated hermetically to prevent pollution in order to meet the needs for hygiene of medicine. This equipment is especially suitable for the material that cannot be granulated by the wet type.

技术参数 Technical parameter

型号 Model	40 型	100 型	120 型
生产能力 Production capacity(kg/h)	10-50	30-150	60-200
颗粒粒度 Particle dynamics(mm)	0.3-2.5	0.3-2.5	0.3-2.5
电机功率 Power(kW)	3.35	10	13
工作压力 Pressure of work(kn)	100	198	198
外形尺寸 Dimensions(mm)	900×900×1650	1980×1500×2150	1880×1550×2200
重量 Weight(kg)	600	2000	2200

KZL Quick Sporting Machine



✓ Main purpose

KZL series fast granule machine in the pharmaceutical industry, chemical industry, food industry widely used, the effect is good. The machine has a reasonable design of the mesh, bar, can crush brittle material, and according to the principle of centrifugal force, with a special hole mesh, screen carefully, special friction can filter rods broken screen solid particles, at the same time grinding large polymer; This machine can replace pendulum pellet machine.

技术参数 Technical parameter

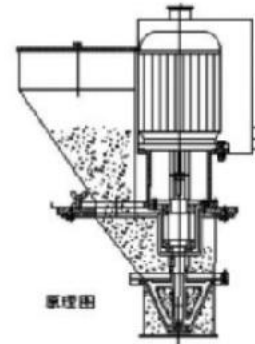
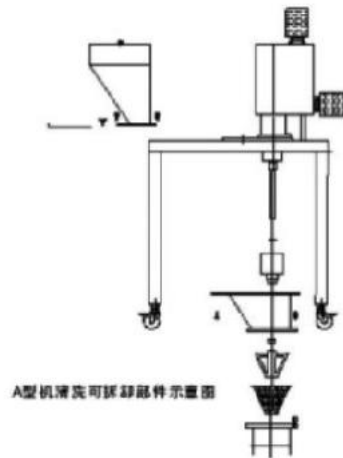
型号 Model	80	120	160	200
旋簧长度 Spinning reed length(mm)	185	185	185	185
滤孔直径 Screen openings diameter(mm)	Φ 1-8	Φ 1-8	Φ 1-8	Φ 1-8
生产能力 Throughput(kg/h)	50-100	100-200	150-300	200-400
电机功率 Motor power(kW)	0.55	1.1	1.5	2.2
转速 Rotation rate(r/min)	1500/3000	1000/1500	1000/1500	800/1000
外形尺寸 Dimensions(mm) L × W × H	650 × 450 × 1000	1000 × 800 × 1200	1060 × 850 × 1350	1100 × 1000 × 1500
重量 Weight(kg)	48	150	180	200

FZ Crush Whole Granule Machine



✓ Main purpose

Pharmacy: Raw material smashes, wet material makes agranule, does the tablet expecting that the entire granule, discrepancy demand, requires the size reclaiming the degree making use of a pellet but pushing down to demand to carryout the entire granule. Food: The broken to pieces reclaim makes use of biscuit. Other: Thick shape raw material broken to pieces and entire granule, form of block raw material broken to pieces and entire granule, packing raw material decomposition



✓ Working principle

The raw material processing enters the feed mouth queen, drop-in-cone-shape workroom crushing entire granule machine, the knife turning round from revolution gets the whorl stream effect to raw material, a pellet is cast aside and with the centrifugal force to screen mesh face, shear an effect at the same time since knife vertiginate and screen mesh turning round come into being face toface, the pellet is smashed becoming the small pellet and is discharged after sieve net hole in the knife turning round and the sieve net. Come broken to pieces granular size, the eye number from screen mesh, to measure spacing and the speed returning to a rotation rate between the knife and screen mesh turning round.

技术参数 Technical parameter

型号 Model	生产能力(kg/h) Production capacity	粒度(目) Mesh	传动座温升(°C) Transmission seat temperature rise	调速范围(rpm) Speed range	电机功率(kw) Power	外形尺寸(mm) Dimension L × W × H	出料口至地面高度 Height (mm)
150 型	15-150	6-80	< 30	单速 2800 变频调速 300-3600	1.5	810 × 445 × 1345	650
300 型	30-300	6-80	< 30		1.5	810 × 445 × 1345	650
450 型	45-450	6-80	< 30		2.2	920 × 445 × 1430	690
700 型	70-700	6-80	< 30		3	1000 × 500 × 1530	690
1000 型	100-1000	6-80	< 30		5.5	1100 × 5600 × 1785	565

YK Swing Granule Machine



✓ Main purpose

This machine is used to develop wet powder into the required particles, and also to grind the block dry material to the desired particles.

✓ Main feature

The screen is easy to disassemble and the tension can be adjusted appropriately. The seven-corner drum is easy to disassemble and easy to clean. The mechanical transmission system is completely enclosed in the machine body, and is equipped with a lubrication system, and the whole machine runs smoothly. The shape of the whole machine is closed by stainless steel, which makes the shape of the whole machine neat and beautiful, especially the stainless steel mesh of the screen.

技术参数 Technical parameter

型号 Model	YK-60	YK-100	YK-160	YK-250
产量 Capacity(kg/h)	20-30	30-200	60-300	100-800
电机功率 Power(kW)	0.25	1.1	2.2	5.5
滚筒转速 Speed(rpm)	46	55	65	55
摇摆角度 Swing angle(°)	360	360	360	360
滚筒直径 Diameter (mm)	60	100	160	250
体积 Overall size (L × W × H)	45 × 45 × 55	70 × 40 × 105	100 × 80 × 130	1270 × 1000 × 1400
重量 Weight(kg)	70	180	280	800

JZL Extruder granulator



✓ Main purpose

This machine is applicable to the pharmaceutical, chemical, food, feed and other industries in the wet legal system for all kinds of particles.

✓ Working Principle

This machine is made of particles through the screw and platehard work backlog, so the rules of particle shape, texture, less fine powder, it is not easy to moisture absorption. Product shelf life is long, especially suitable for traditional Chinese medicine in chemical and food industry production granulated granule products, etc. The machine adopts stainless steel manufacturing, surface polishing, installation, cleaning is very convenient. Especially suitable for wet granulation in soluble material.

技术参数 Technical parameter

型号 Model	JZL-60	JZL-140
两螺杆中心距 Two screw center distance(mm)	250	300
生产能力湿料 Production capacity of the wet material(kg)	250	300
成品颗粒尺寸 The finished product particle size(mm)	5.5	7.5
挤压轴转速 Squeeze the closing speed(r/min)	350	400
电动机功率 Power(Power)	5.5	7.5
重量 Weight(kg)	140-200	140-400
外形尺寸 Dimensions(mm)(L x W x H)	1400 x 650 x 1300	1500 x 700 x 1500

LXS Series Rotary Screener



✓ Main purpose

Being an ideal screening equipment applied in pharmaceutical chemical, food stuff trades etc., this machine is particularly used for screening of high fiber, high viscosity, high humidity, electrostatic and easy blocked materials.

✓ Working Principle

Material is fed into the screen box through screw conveyor continuous rotation of the vane pushes the material forward. Fine material is fallen from the screen, and the coarse material further advanced and discharged from the coarse port, and thus reaching the ideal screening effect.

技术参数 Technical parameter

型号 Model	LXS-250型	LXS-350型
生产能力 Production capacity(kg/h)	60-800	200-1800
过筛目数 Screen mesh(mesh)	20-300	20-300
电机功率 Motor power(kW)	5.5	7.5
主轴转速 Spindle speed(r/min)	960	1200
重量 Weight(kg)	250	380

ZS Sifting Machine



✓ Main purpose

This machine is applied for the sorting of the granule size of dry powder materials in the trades of medicine, chemical, and food stuff etc.

✓ Working Principle

This machine is composed of the vertical motor, a sieve bottom, a mesh frame, sieve room, rubber vibrating bowl, and all fastening pieces etc. It can be operated for the sorting purpose either in single sieve or multi-sieves with a compact structure, easy operating and repairing, smooth running, ownoise, arge target materials-treating, good fineness, and wide applicability etc.

技术参数 Technical parameter

型号 Model	ZS-400	ZS-600	ZS-800	ZS-1000	ZS-1500
生产能力 Production capacity(kg/h)	100-800	200-1500	200-2500	500-3500	1200-8000
过筛目数 Screen mesh(mesh)	2-200目	2-200目	2-200目	2-200目	2-200目
振动频率 Vibraton freq(次 /min)	1500	1500	1500	1500	1500
电机功率 Motor power(kW)	0.55	0.75	0.75	1.1	2.2
外形尺寸 Dimensions(mm)(L x W x H)	600 x 500 x 1100	800 x 700 x 1150	1100 x 950 x 1150	1200 x 950 x 1150	1580 x 1600 x 1300
重量 Weight(kg)	200	250	300	380	750



ZS Vibrating Screener



✓ Main purpose

ZS series vibration is suitable for in line production. It is an ideal device for granule that has uneven size to sieve continuously.

✓ Working Principle

This machine is consisted of the hopper, vibration chamber, clutch, motor etc. The vibration chamber is equipped by eccentric wheel, rubber soft pieces, man shift, bearings etc. When the adjustable eccentric weight passed its gravity to the central line of main shift by the driving of motor to break the balance, then under the centrifugal force, the orbit spire of target materials is forced to change its way in the chamber. The size of swing of the weight regulator can be adjusted according to different kind of target material or the number of mesh. The whole machine has the specialties of compact structure, small volume, non-dust flying, low noise, and high output, low energy consumption, easy to be moved and maintained.

技术参数 Technical parameter

型号 Model	生产能力(kg/h) Production Capacity	过筛目数(mesh) Number of mesh	电机功率(kW) Power	主轴转速(r/min) Spindle speed	外形尺寸(mm) L x H x W	重量(kg) Weight
350	60-200	12-200	0.55	1380	540 x 540 x 1060	100
515	100-500	12-200	0.75	1370	710 x 510 x 1290	180
650	180-2000	12-200	1.50	1370	880 x 880 x 1350	250



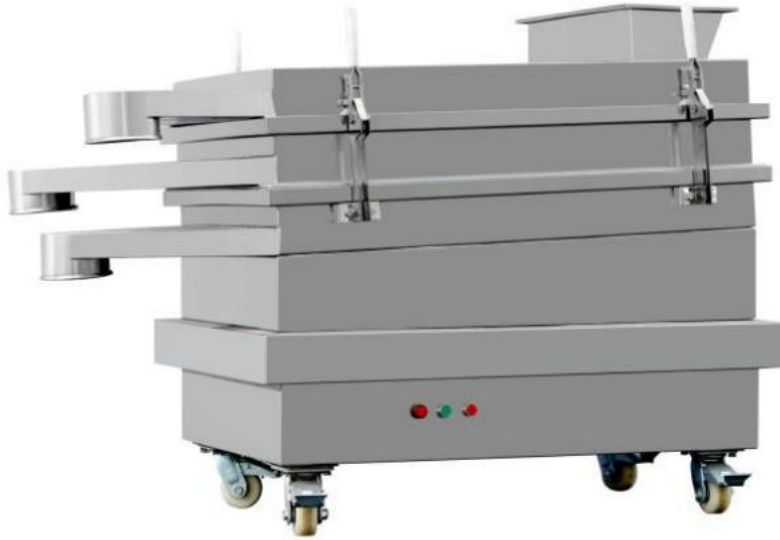
FS Square Vibration Sieve

✓ Main purpose

This machine is a new generation of sieving powder equipment developed by our factory. It is popular among users because of its unique high efficiency, energy saving and low noise. It is widely used in medicine, chemical, food and other industries. The various materials are continuously screened and can be made into 1-4 layers according to user needs. The machine has the advantages of simple structure, convenient operation, small volume, large processing capacity, low noise, corrosion resistance, low failure, long service life, high productivity, adjustable amplitude, low energy consumption, convenient disassembly and assembly, no dead angle cleaning, no dust flying. Etc.

✓ Main feature

The upper part of the machine adopts quick-release handle, which connects the whole machine into one whole, and the upper cover is fully sealed, which effectively prevents dust from flying due to vibration during material screening. The vibration motor is installed in the lower part of the sieve body which effectively ensures the compact structure of the material, and the spring is used for vibration reduction in the lower part, so that the whole machine works in a stable state. The base is adjustable, and the angle of inclination of the screen is adjusted to achieve the best screening effect according to the material characteristics.



技术参数 Technical parameter

型号 Model	FS-0.6 × 1.5	FS-0.65 × 2.0
功率 Power(kW)	0.4 × 2	0.4 × 2
筛面倾斜 Sieve surface inclination	0-45° 可调(Adjustable)	0-45° 可调(Adjustable)
电压 Voltage(V)	380	380
筛面层次 Sieve surface layer	1-4	1-4
过筛目数 Mesh numbers	6-120	6-120
产量 Output(kg/h)	150-1500	160-2000
重量 Weight(kg)	550	650
外形尺寸 Dimensions(L × W × H)	1500 × 700 × 700	2100 × 750 × 780

LS Spiral Conveyor



✓ Application Scope

1. Suitable to use under the condition of material increased to ascertain height, such as injection molding machine, mixer, crusher, quantitative packing machine, quantitative packing scale, etc.
 2. Appropriate use of materials: dry bulk powder material (such as starch, flour, spices, additive, pesticide, chemical industry, veterinary medicine, etc.); Breakage of the small particle materials (such as: PVC granules, chicken essence, sugar, monosodium glutamate, small grains, etc.)
 3. In appropriate use of the material: ultra-fine powder, there is no broken small particles, materials with high water content and viscosity.
 3. screw feeder, screw hoist optional drive mode:
 - 3.1. belt to slow down
 - 3.2. chain to slow down
 - 3.3. reducer reducer
 4. Optional material: carbon steel, 304 stainless steel, 316 stainless steel.
- Note: different material is used for different field and material properties and selection, general corrosive strong choose 316, the choice of food-grade 304 stainless steel, no corrosive to choose painted carbon steel, Can undertake choosing according to the user's own condition.

✓ Working Principle

Spiral feeding machine is produced by motor power, drive the cycloid speed reducer drive to corti, is a kind of using screw rotate forward extrusion of material, make the material produces push forward at the same time, the spiral feeding machine from the inlet feed through corti mandatory conveying to the discharge port.

技术参数 Technical parameter

型号 Model	LS-100	LS-160	LS-200	LS-300	LS-500	
螺旋转速 Screw rotation speed (r/min)	310	310	310	310	220	
机壳外径 Casing diameter (mm)	Φ 100	Φ 160	Φ 200	Φ 300	Φ 500	
输送量 Throughput (t/h)	8	16	30	45	55	
输送角度 Transmission angle (α)	0° ~60°	0° ~60°	0° ~45°	0° ~45°	0° ~30°	
电机 Motor	型号 Motor model	Y100L1-4	YS132S-4	YS132S-4	Y160M-4	Y160M-4
	功率 Power	2.2KW	5.5KW	5.5KW	7.5KW	15KW
	加重型号 Compound type	Y100L2-4	YS132S-4	YS132M-4	Y160L-6	Y160L-6
	功率 Power	3KW	5.5KW	7.5KW	11KW	22KW

ZKS Vacuum Feeder



✓ Purpose

It is mainly used for conveying powder and granular materials in applications with high height and long distance. The vacuum feeder is a preferred machine for automatic feeding for tablet press, capsule filler, dry type granulator, packaging machine, crusher and vibrating screen. It is widely used in such industries as medicine, chemical industry, food, etc.

技术参数 Technical parameter

型号 Model	ZKS-1	ZKS-2	ZKS-3	ZKS-4	ZKS-6	ZKS-7
整机功率 Machine power(kW)	1.5	2.2	3	5.5	5.5	7.5
输送能力 Conveying capacity(Kg/h)	400	600	1200	2500	3200	6000

本公司可按用户特殊要求定制生产。
Our company can customize the products according to special requirements of users.



www.lkmixer.com

ZKS Vacuum Feeder



✓ Principle

The vacuum feeder is also called vacuum conveyor, which is a kind of dust-free closed pipe conveying equipment that conveys granular and powder materials through vacuum suction. It uses the air pressure difference between the vacuum and atmosphere to form air flow inside the pipe and drive the materials to move so as to complete the conveying of materials.

✓ Feature

The vacuum feeder adopts a quick installed structure. The parts that contact materials are made of high quality austenitic stainless steel.

It is provided with material level sensor with good sensitivity and stable quality.

It adopts unique high pressure vortex air pump, which is featured by small volume, low noise and long service life. The automatic pulse back blowing system and automatic cleaning filter ensure that the equipment can run continuously without blocking.

Through automatic control, the repetitive work process such as feeding, discharging and back flowing are completed automatically.

Open Type Packing Machine



Enhance your material packaging control capabilities with automated features that seamlessly integrate weight display, packaging timing control, process chain management, and fault detection alarms. This system efficiently meters and records package output as well as the cumulative count of packages, with the added convenience of zeroing out the counts when needed.

This advanced solution boasts a high-brightness fluorescent display for clear visibility and offers the capacity to store up to seven distinct package specifications, each accompanied by customizable heavyweight control parameters. Furthermore, the system incorporates automatic zero tracking, enabling precise digital software scheduling at any weight point along the production process.

✓ Product introduction

The pneumatic packing machine is a cutting-edge solution designed for the precise quantification of dry mixed mortar. It incorporates advanced German technology, ensuring a seamless and user-friendly operation. Notably, it stands out with its exceptional automation, minimal mechanical wear, superior sealing capabilities, and a remarkable measurement accuracy with a deviation of just ± 0.5 .

This machine is characterized by a robust and reliable structure that guarantees high productivity. Its innovative high-pressure box full blowing device plays a pivotal role in maintaining the integrity of dry mixed mortar during the packaging process, preventing any separation and ensuring a clean and efficient discharge.





www.lkmixer.com

CT/CT-C Heat Wind Cycle Baker



原型号 Previous model



✓ Primary Purpose:

The dry hot air circulation drying oven, known as the CT series, has evolved from an initial average thermal efficiency of approximately 30% to a remarkable 70% after undergoing three successive improvements. This transformation is attributed to its groundbreaking adoption of a low-noise, high-temperature-resistant axial flow fan, coupled with an automatic temperature control system. The entire circulation system is now sealed, propelling China to an advanced position in hot air circulation drying oven technology on both domestic and international fronts.

The CT-C hot air circulation drying oven design marks a significant milestone, catapulting Chinese technology to the forefront globally. By significantly enhancing energy efficiency, this advancement contributes to the improved economic performance of enterprises.

✓ Application Scope:

This versatile drying oven accommodates various heating sources, such as steam, electricity, infrared rays, or a combination of steam and electricity. The operating temperature range spans 50-140° C for steam heating, with a maximum of 150° C. When employing electricity or infrared rays, the working temperature extends from 50 to 500° C. Users can select from automatic control systems and computer control systems, offering flexible solutions. Common steam pressures range from 0.02-0.8Mpa (0.2-8kg/cm²), and the power requirement for electric heating is typically 15KW (but may vary, with an actual consumption of 5-8kw/h).

When placing orders, kindly specify any unique requirements. The pricing for non-standard ovens is open to negotiation. Additionally, please specify working temperatures exceeding 140° C or falling below 60° C during the ordering process. The drying carts and drying discs are designed with standardized dimensions upon delivery, ensuring interchangeability.

Drying Disc Dimensions: 460 x 640 x 45mm

✓ Characteristic

Efficiency and energy savings are at the forefront of our oven's design, ensuring that most of the hot air circulates within with exceptional effectiveness. This is achieved through the use of forced ventilation. What sets our oven apart is the presence of an adjustable air distribution board, which guarantees uniform drying of materials. You have the flexibility to choose from a range of heat sources, including steam, heat transfer oil, hot water, electricity, and infrared rays, adapting the machine to your specific needs.

The machine stands out for its low noise levels, well-balanced operation, automatic temperature control, and ease of installation and maintenance. Its versatility knows no bounds, as it serves as a universal drying machine, accommodating a wide array of materials.

✓ Application Scope:

This versatile drying machine finds its utility across a broad spectrum of applications. It plays a pivotal role in the heating, curing, drying, and dehydrating processes for materials and products in various industries, including medicine, chemical, food, and light industries, heavy industry etc., for example: pharmaceutical materials, crude drugs, slicedherbal medicines, powders, granules, medicinal granules, smalland large honeved pill packaging bottles, pigments, dves.dehydrated vegetables, dried fruits, sausages, plastic resins,electrical components, baking finishes, etc.

技术参数 Technical parameter

型号 Model	YY0026-90 行业标准 型号 Industry standard model	蒸发面积 Evaporation area (m ²)	有效容积 Efficient volume (m ³)	每次干燥量 (kg/批) Drying volume each time (kg/lot)	散热器 面积 Radiator area (m ²)	耗用蒸汽 consum- ption (kg/h)	电加热 功率 Electric heating power (kw)	风机风量 Fan air volume (m ³ /h)	风机 电功率 Fan electric power (kW)	箱内温差 Temperature difference in the oven (°C)	外形尺寸 宽×深×高 Outline dimensions W×D×H (mm)	配件 Fittings			总重量 Total weight (kg)
												已配A3烘车(辆) A3 drying carts used (carts)	应配用烘盘(只) Drying ovens used (pieces)	温度自控箱 Temperature automatic control box	
CT-0	RXH-7-B	7.1	1.3	60	15	15	6-9	1417	1.1	±1	1050*1600*2100	1	24	无 No	420
CT-I (双门)	RXH-14-B	14.1	2.6	120	23	20	15	1417	1.1	±2	2430*1200*2430	2	48	无 No	920
CT-II	RXH-27-B	28.3	4.9	240	48	40	30	5230	1.1	±2	2430*2160*2625	4	96	无 No	1580
CT-III	RXH-41-B	42.4	7.4	360	72	60	45	9800	2.2	±2	3420*2160*2670	6	144	无 No	1900
CT-IV	RXH-54-B	56.5	10.3	480	96	80	60	9800	2.2	±2	4360*2160*2670	8	192	无 No	2300
CT-C-0	RXH-7-C	7.1	1.3	60	15	15	6-9	4510	0.45	±1	1350*1200*2140	1	24	有 Yes	480
CT-C-I	RXH-14-C	14.1	2.6	120	23	20	15	4510	0.45	±2	2240*1200*2160	2	48	有 Yes	1080
CT-C-II	RXH-27-C	28.3	4.9	240	48	40	30	9020	0.45×2	±2	2240*2160*2160	4	96	有 Yes	1520
CT-C-III	RXH-41-C	42.4	7.4	360	72	60	45	13530	0.45×3	±2	3230*2160*2200	6	144	有 Yes	1960
CT-C-IV	RXH-54-C	56.5	10.3	480	96	80	60	18040	0.45×4	±2	4330*2160*2270	8	192	有 Yes	2400

A cosmic background featuring a vibrant blue nebula with intricate filamentary structures. The scene is filled with numerous stars of varying sizes and colors, including bright white and yellow stars. A prominent white rectangular frame is centered on the image, containing the text 'THANK S'. The overall color palette is dominated by deep blues, blacks, and bright whites, creating a sense of vastness and wonder in space.

THANK

S